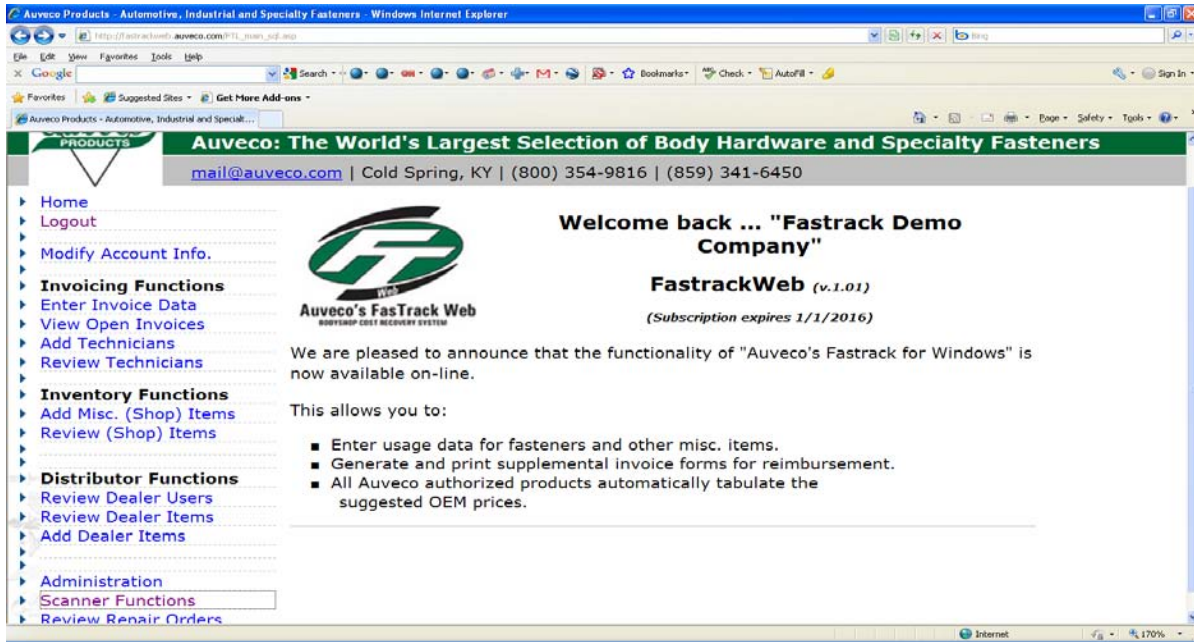
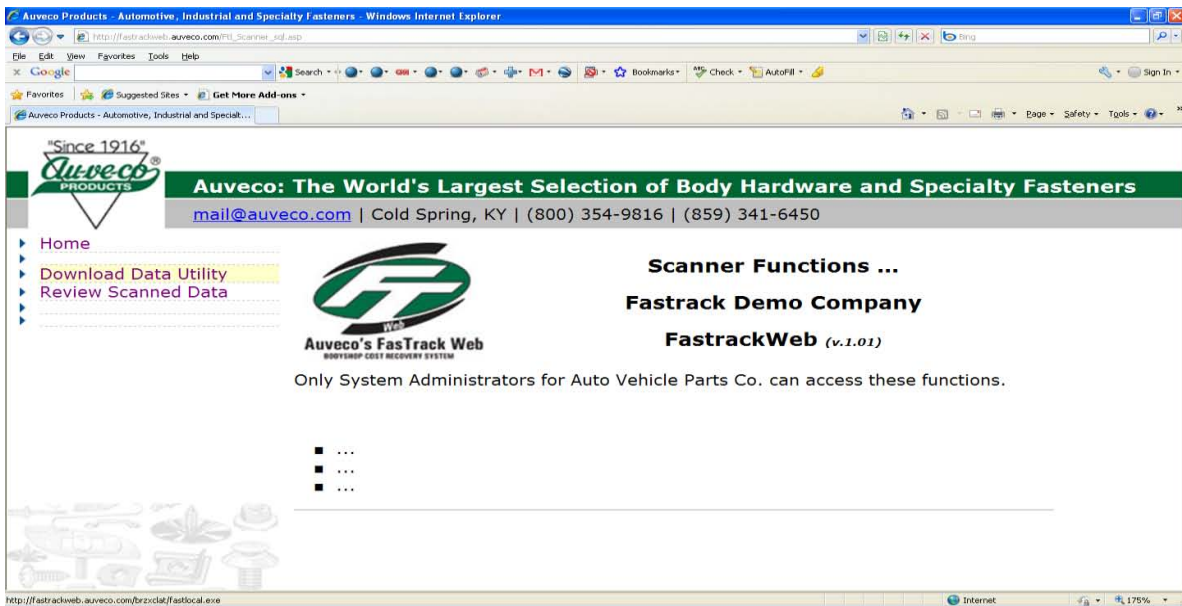


Installing and operating the Socket Mobile Somo650 Scanner for FasTrack Web:

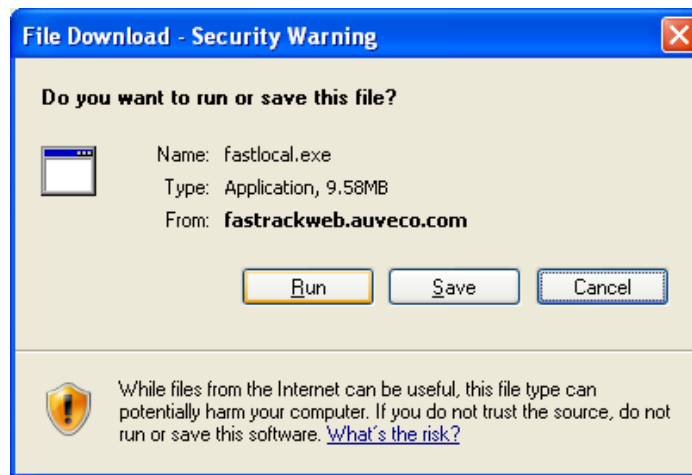
1. Log in to FasTrack Web using your unique username and password
2. Choose **“Scanner Functions”**



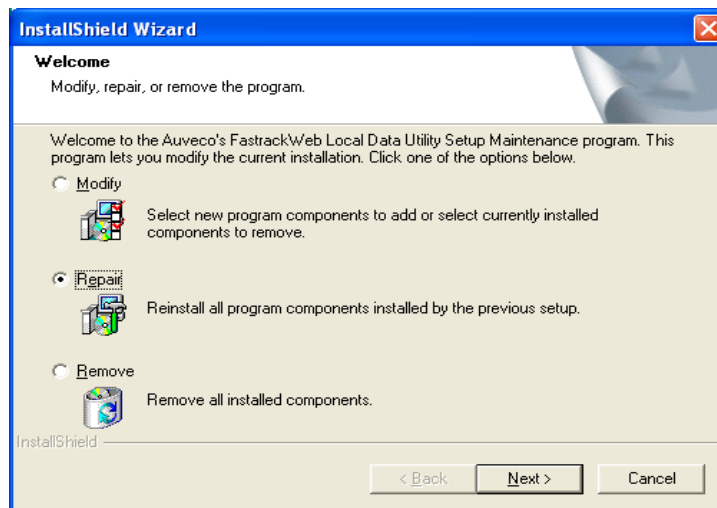
3. Choose **“Download Data Utility”**



4. Choose **run**



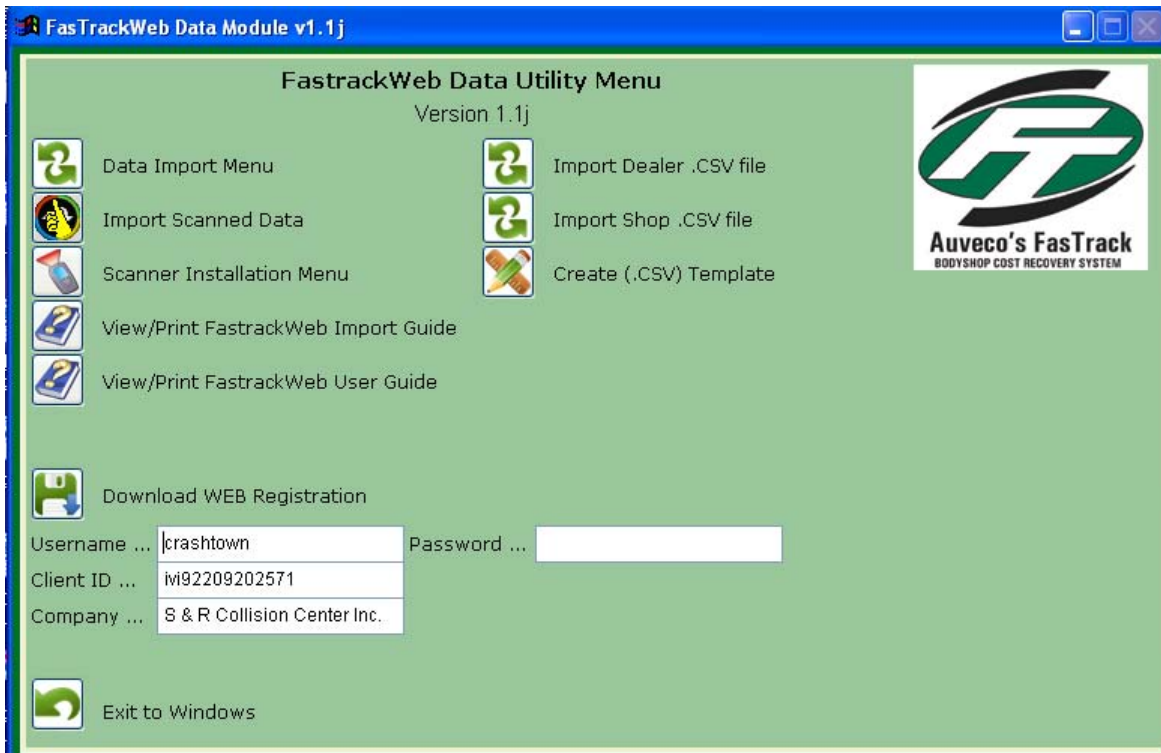
5. Choose **Repair**



After this utility has run, you will then have a new icon on your desktop for FasTrack web.



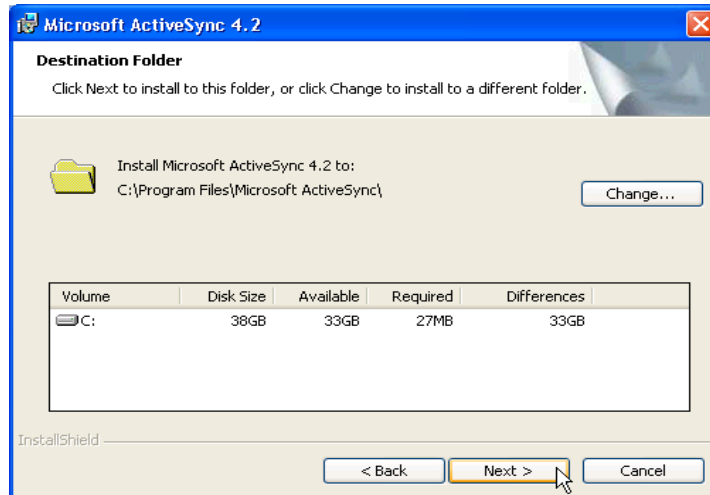
Click on the **FasTrack web icon** and the screen below will appear.



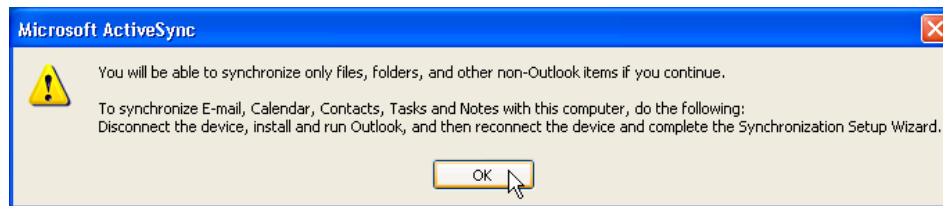
If you are converting from FasTrack Pro and have been using the Socket Mobile Somo 650 Scanner, then you are ready to use the system, no further installation steps are necessary. Once you have scanned items that are ready to import, you simply need to choose “**Import Scanned Data**” from the **FasTrackWeb Data Utility Menu** and follow the steps.

If this is the first time using the Somo650, you will need to use the following procedures before your scanner will function within the program software.

- A.** From the **FasTrack Data Utility Menu**, enter your username and password then click on “**download web registration**”
- B.** Click on **Scanner Installation Menu** to install **Microsoft Active Sync v4.2**
- C.** Click “**Next**” to continue the installation.
- D.** Read and accept the license agreement, and click “**Next**” to continue.
- E.** Enter your organization’s information if desired and click “**Next**” to continue.
- F.** It is important to accept the default location, unless you have a non-standard disk configuration. Click “**Next**” to continue the installation.



- G. Click “**Install**” to continue the installation.
- H. Click “**Finish**” to continue the installation.
- I. If you do not have Microsoft Outlook installed on your computer, you may see the following dialog. Please just **ignore** and continue.



*******Restart your PC*******

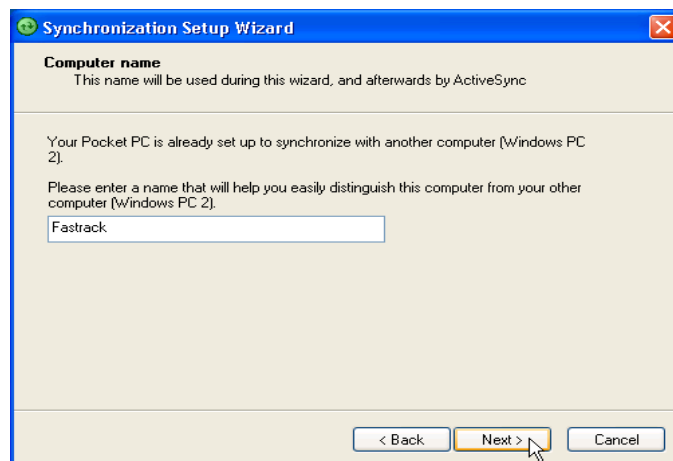
Configure the Pocket PC device for synchronization.

1. Plug in the Socket Communications cradle using the supplied USB cable.
2. Turn on the SOMO650 scanner and place it in the cradle.
3. When you have restarted you PC, You should be presented with the following dialog

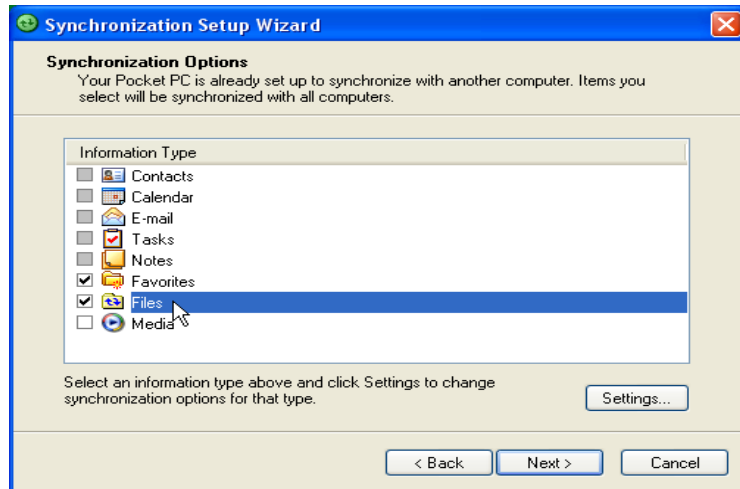
- **Step 1** Click “**Next**” to begin the installation.



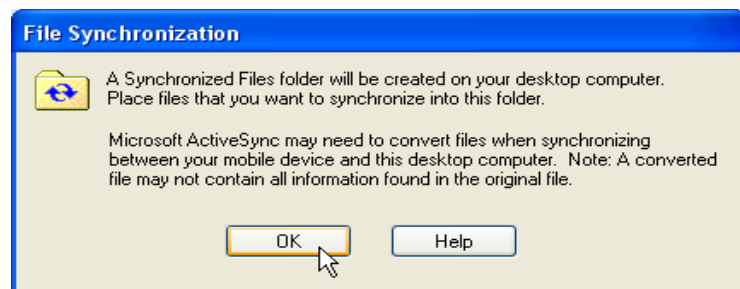
- **Step 2** While not mandatory, it is suggested that you name the Windows Mobile device instance “Fastrack”. This will help with further updates and any support issues that may arise.



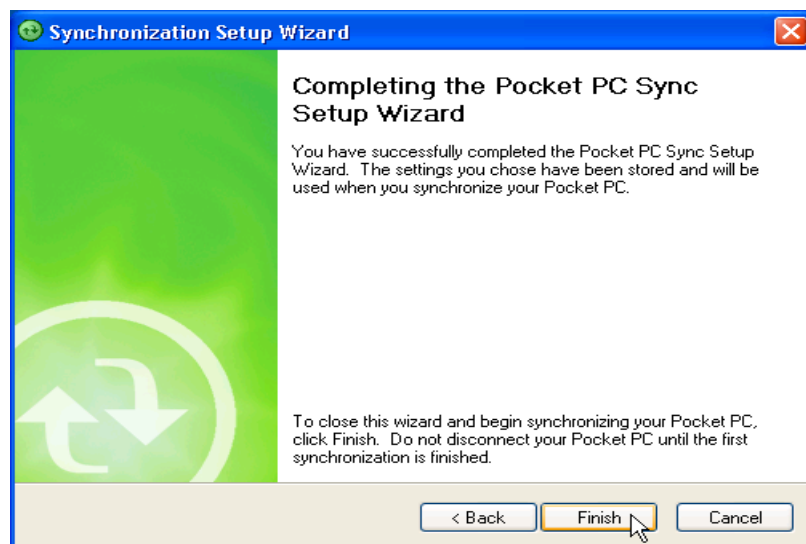
- **Step 3** If you want to use the SOMO650 for organizing your own data via Microsoft Outlook, you may enable as many of the functions as you wish. However, Fastrack Professional only requires the ones listed below.



- **Step 4** Click "OK" to proceed with the local folder creation.

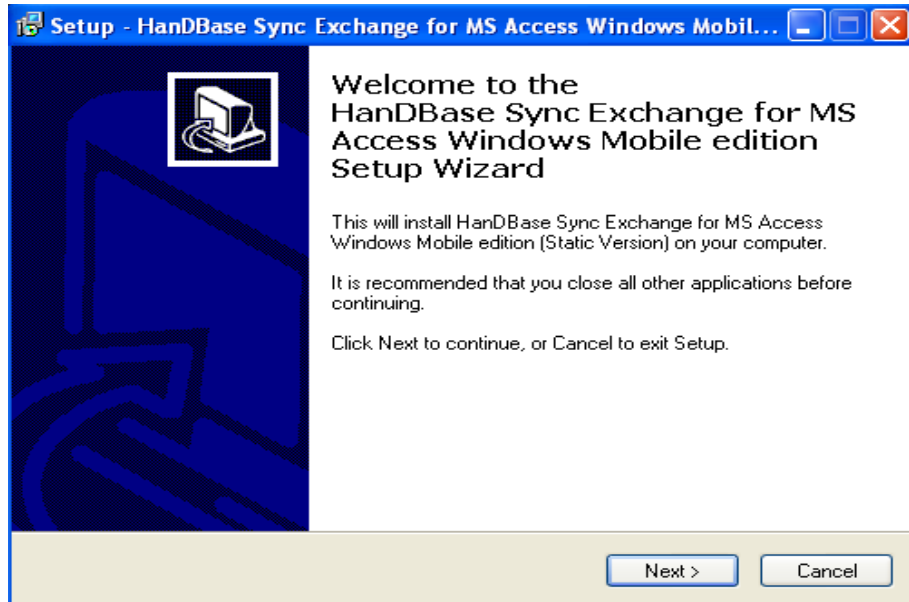


- **Step 5** Click "Finish" and you are done with this step of the process.

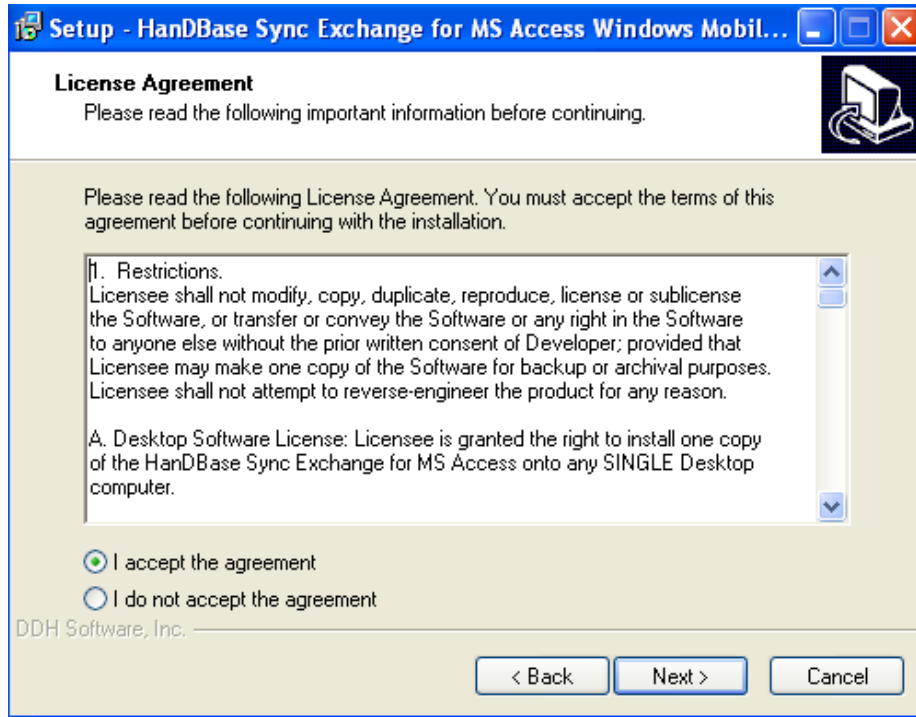


...continuing scanner installation,

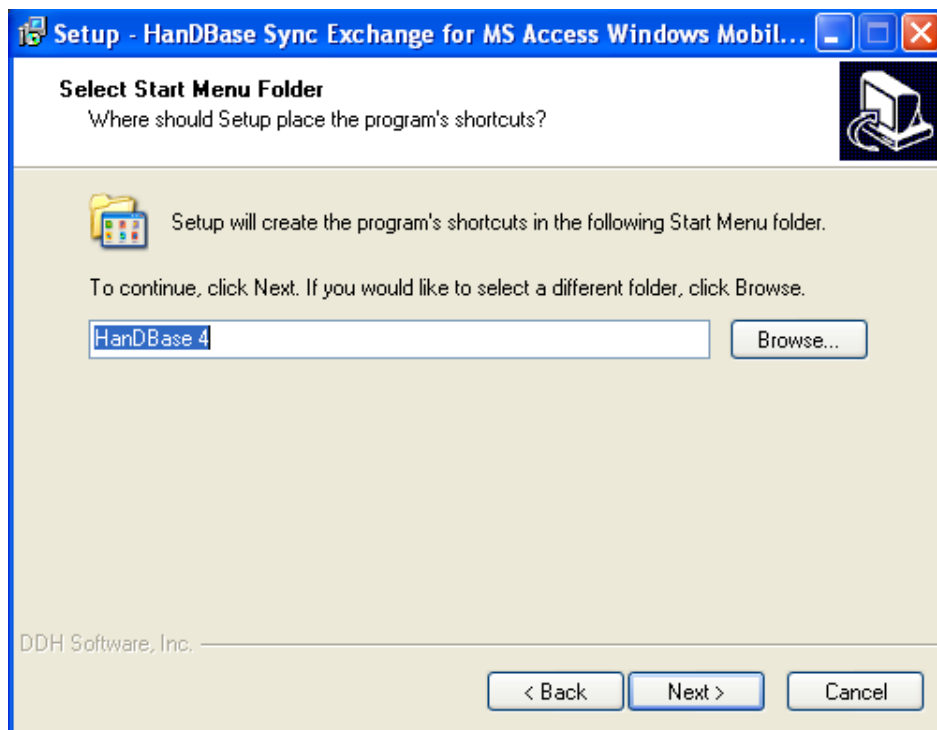
Choose **“FasTrack Mobile v1.0 (Desktop)”** from the scanner installation menu. The screen will flash briefly and you will be presented with the following screen.



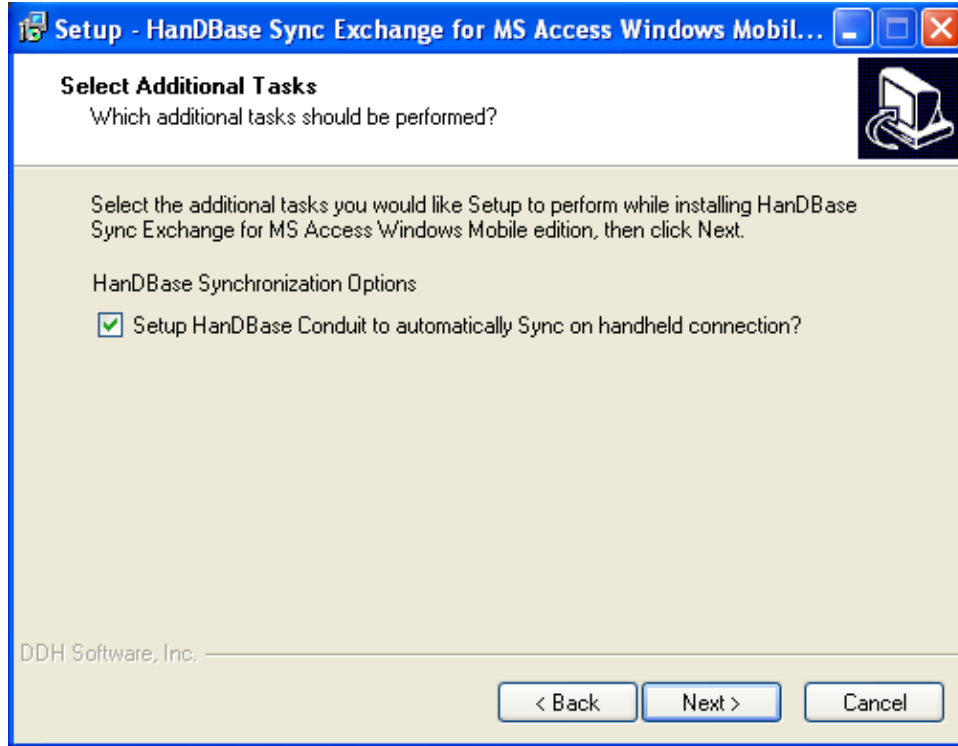
Choose to accept the agreement and click OK.



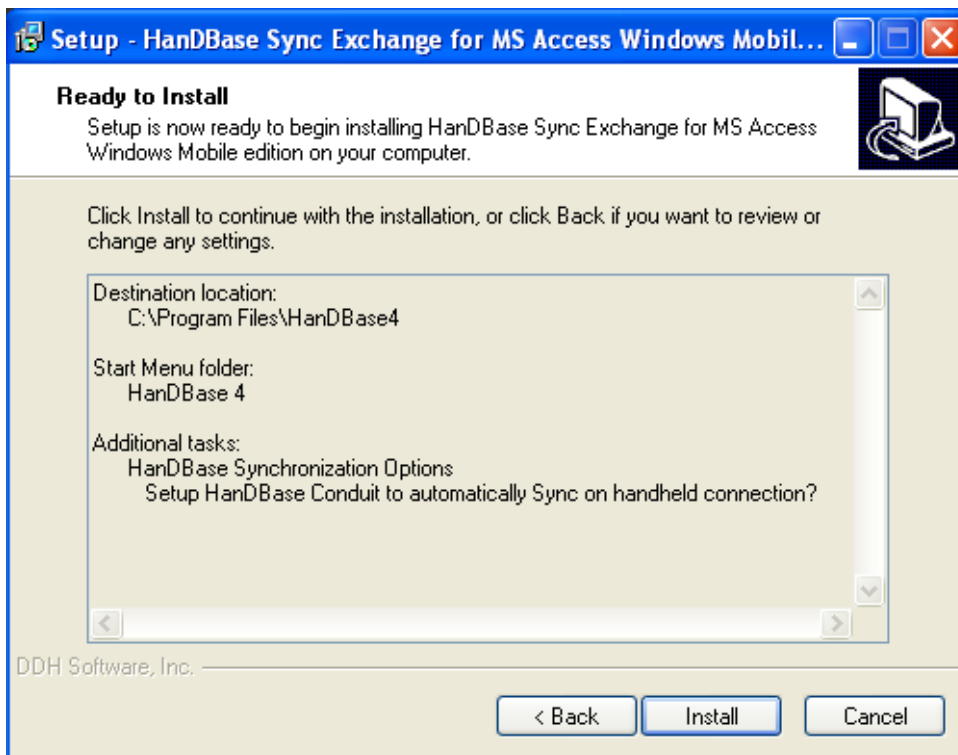
Click Next...



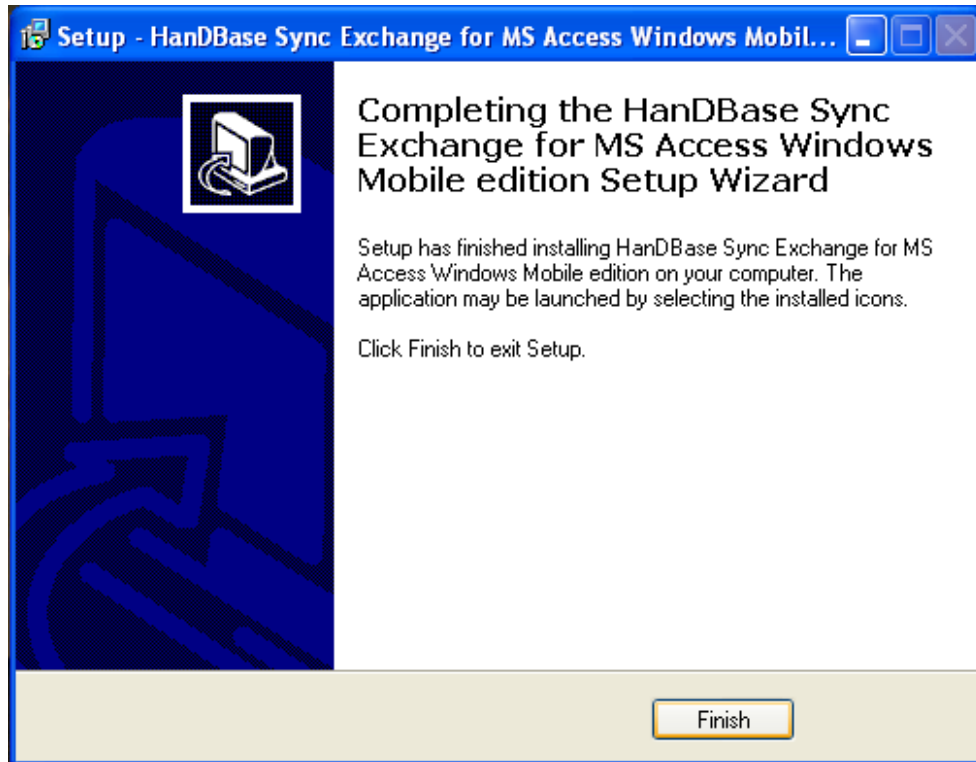
Click next...



Click Install...



Click Finish...



Next...

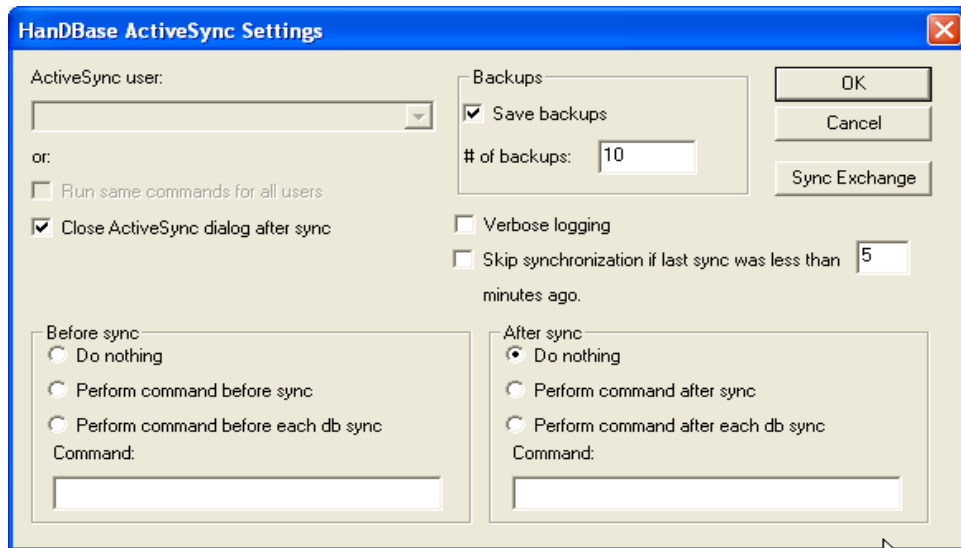
1. Select the option from the “**Scanner Installation Menu**” to “**Setup Sync Conduit Options**”. Your screen will blink momentarily as the conduit options are configured automatically.

Setup Synchronization Conduit for HandBase

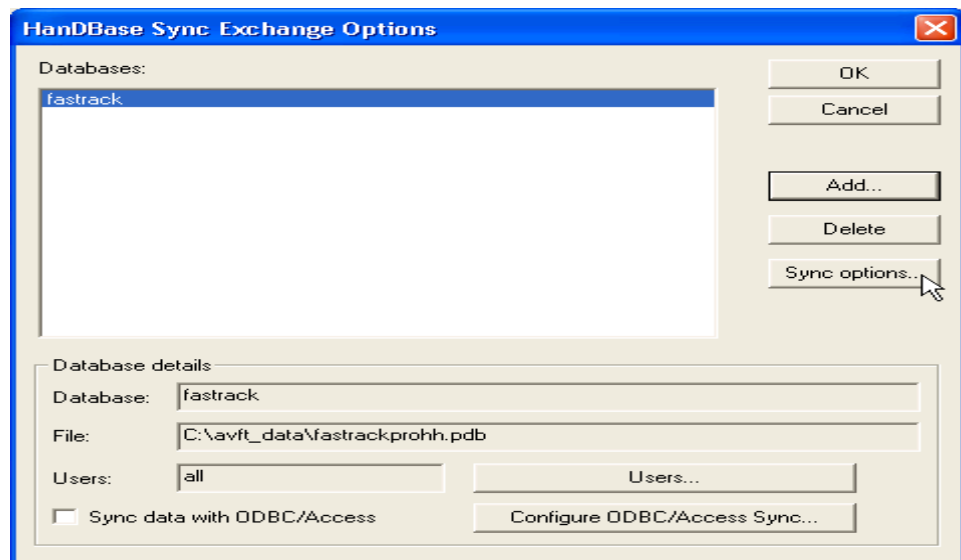
1. On the desktop of the PC, Double click the icon for “Conduit Options”



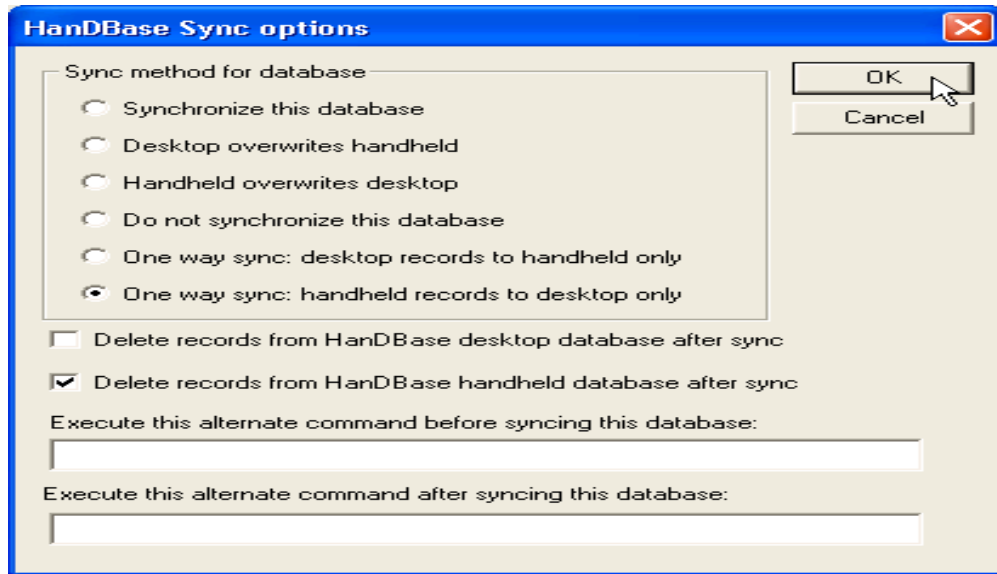
2. The following dialog should be displayed and set as depicted below.
3. **IF ...** you have the option, click the “Run same commands for all users” also. Then click the “**Sync Exchange**” button to continue ...



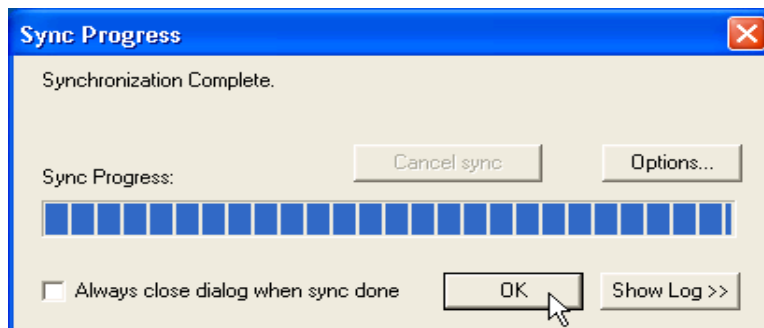
4. You should now have the following configuration. Click **“Sync options”** to proceed.



5. Set your screen as follows and make sure to click **“OK”** on each screen as you close out of the “Conduit Options” configuration.



1. At this point, you can **Restart your PC**. During the synchronization process, you may see the following dialog and should check the box to close after it is finished.



Help/Technical Support

There are several Technical Support options available to all registered FasTrackWeb users. It would be wise to periodically check the Auveco website for the latest FasTrackWeb product information.

For any assistance with your Microsoft Windows software, refer to your own documentation. It is important that you know the basic Windows file management operations and commands. **We cannot provide training or assistance with any version of MS-Windows.**

We will only provide Technical Assistance for the FasTrackWeb program and the Socket Mobile Somo650 scanner through these mediums:

1. Phone: Call the FasTrackWeb support line @ **(800) 354-9816 x 103(8:00 AM – 5:00 PM Eastern Time)**
2. Email: Send your questions to mabrams@auveco.com
3. FAX: Error Messages can be printed out and sent to **(859) 442-4556**

REMEMBER:

Auveco licenses its use only through qualified Auveco distributors. All updates to FasTrackWeb including pricing information, occasional fixes and/or enhancements to the software will be done by Auveco.